



2019 - 2020 Auditions
August 20, 2019
Dearborn Performing Arts Center

Prepare an etude, solo piece, or excerpt that best demonstrates your tone. Maximum 2 mins.
Prepare the following excerpts:

tuba

Hindemith, March • Opening to B • F to G • K to the end
Shostakovich, Festive Overture • Opening to 4 • 11 to 13 • 24 to 26

70

2
Basses

BOSTON UNIVERSITY BANDS 6/6

821

MARCH

from Symphonic Metamorphosis
of Themes by Carl Maria von WeberPAUL HINDEMITH (1943)
Transcribed for Concert Band by
Keith Wilson

(♩ = 80) 4

Stg. Bs.

p

A *mf* 3

p

1 3 2 one only

mf *p* *cresc.*

B

3 *mf*

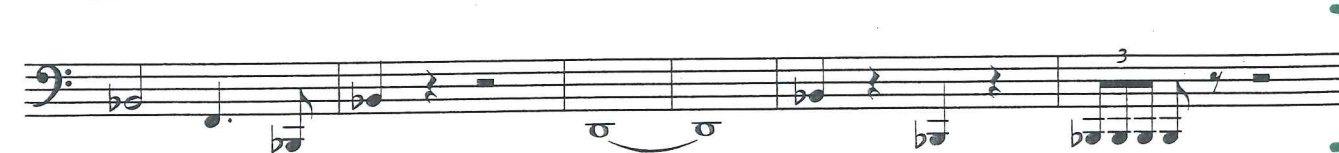
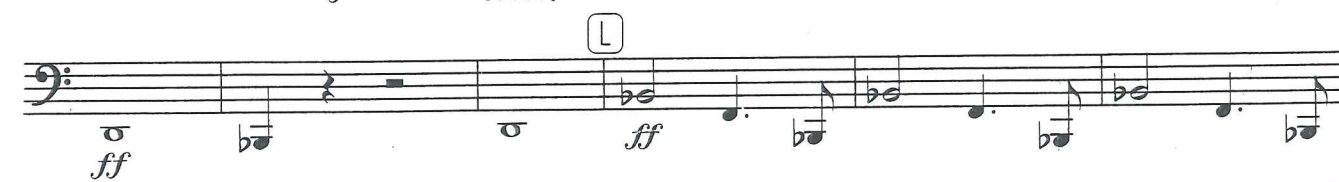
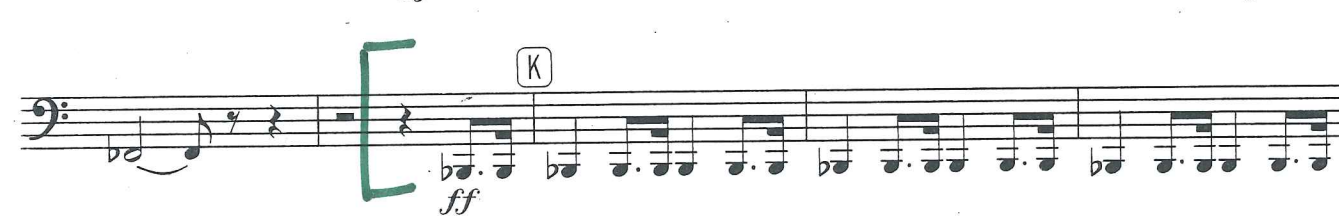
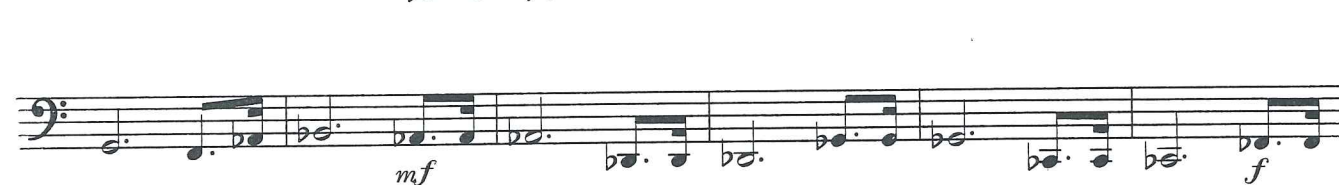
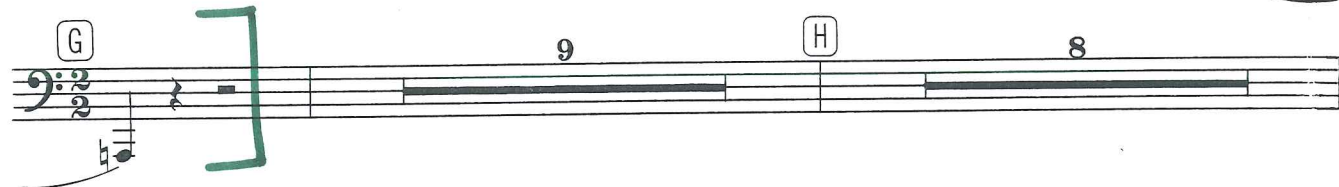
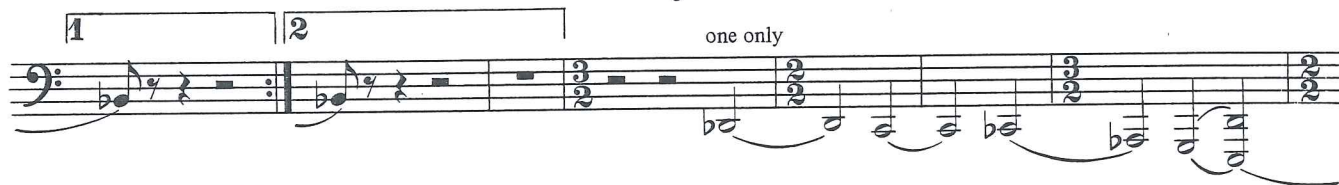
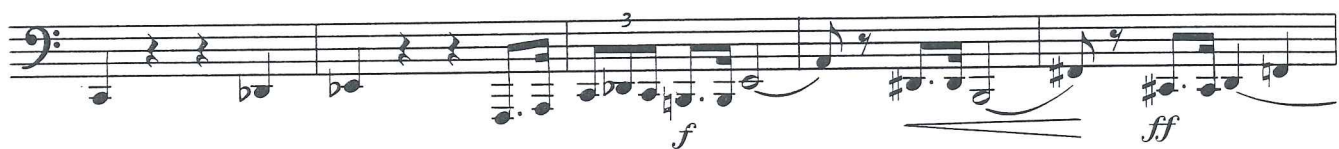
C 6 **D** 9

E *p* *cresc.*

6 **F** 3 *f* *mf*

Basses

3



FESTIVE OVERTURE

Tuba

DMITRI SHOSTAKOVICH, Opus 96

Transcribed by Donald Hunsberger

Allegretto

4

1

3

2

3

4 Presto

rall.

p

5

Handwritten musical score for Tuba, measures 11 through 14. The score is written in bass clef with a key signature of two flats (B-flat and E-flat). Measure 11 begins with a dynamic marking of *mf* and a tempo marking of *a2*. A green bracket groups measures 11 and 12, with a *ff* marking at the end of measure 12. Measures 13 and 14 are marked with a green bracket and a *f* dynamic marking. Measure 13 includes a *Bar.* stacc.* instruction. Measure 14 is marked with a *stacc.* instruction. The score consists of four staves of music, each containing a series of notes and rests, with some notes marked with accents or slurs.

11

mf

a2

ff

12

13

f

Bar. stacc.*

14

stacc.

* One Tuba may be added for additional weight to Baritone.

