



2019 - 2020 Auditions  
August 20, 2019  
Dearborn Performing Arts Center

Prepare an etude, solo piece, or excerpt that best demonstrates your tone. Maximum 2 mins.  
Prepare the following excerpts:

Flute – March – Paul Hindemith B to F  
Festive Overture- Dmitri Shostakovich 5 to 7 and 22 to 24

## 2

from Symphonic Metamorphosis  
of Themes by Carl Maria von Weber

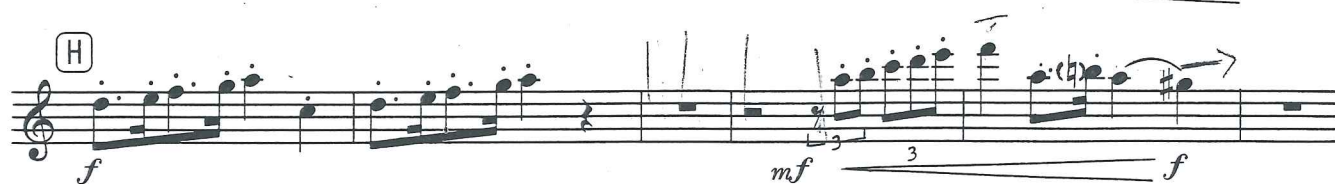
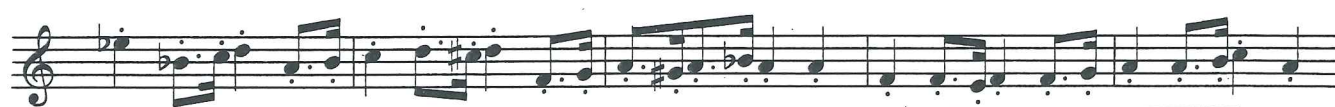
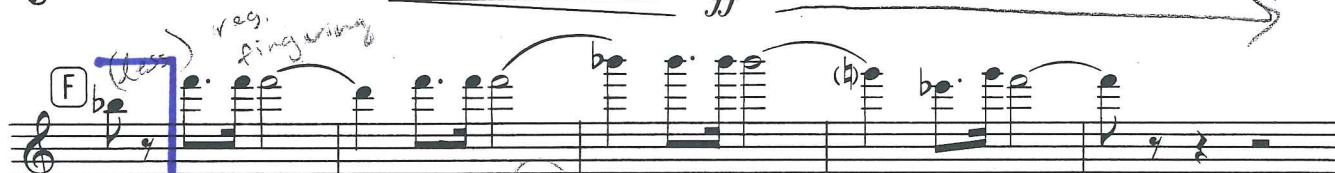
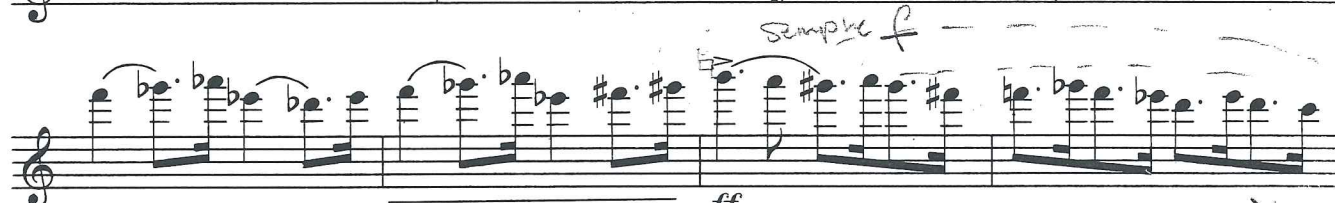
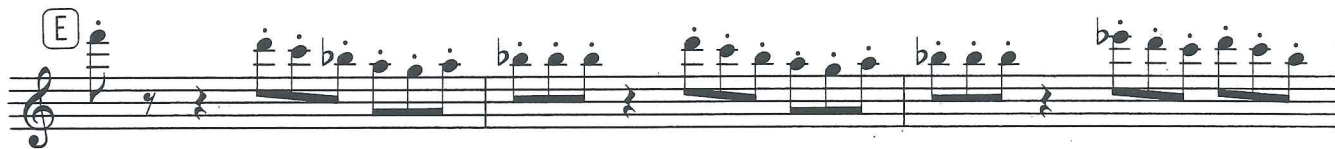
PAUL HINDEMITH (1943)

*Transcribed for Concert Band by*  
Keith Wilson

(♩ = 80)

# 1st Flute

3





# FESTIVE OVERTURE

1st Flute

DMITRI SHOSTAKOVICH, Opus 96  
Transcribed by Donald Hunsberger

Allegretto

7 1 5 2 3 Ob.1 3 3 3 3 3 3

*ff*

3 *ff*

*rall.*

4 Presto 11 5 *mf*

6

7 1 *fz*

7

22

*ff*

*tr*

23

*ff*

24

*f*

25

(8va ad lib)

(loco)

26

Detailed description: This is a page of musical notation for the 1st Flute part, spanning measures 22 to 26. The music is written on ten staves. Measures 22 and 23 are marked with a pink bracket. Measure 24 is marked with a pink bracket and the dynamic *f*. Measure 25 includes the instruction (8va ad lib) and measure 26 includes (loco). The notation includes various musical symbols such as notes, rests, slurs, and dynamic markings.